

H₂S and COS on ZB-1Column: Zebron[™] ZB-1, GC Cap. Column 30 m x 0.32 mm x 3.00 µm, Ea

Phase: 100% Dimethylpolysiloxane

Dimensions: 30 meters x 0,32 mm x 3 µm

Order No: 7HM-G001-36

Oven Profile: 30 °C for 3 min

Carrier Gas: Constant Flow Helium, 2 mL/min

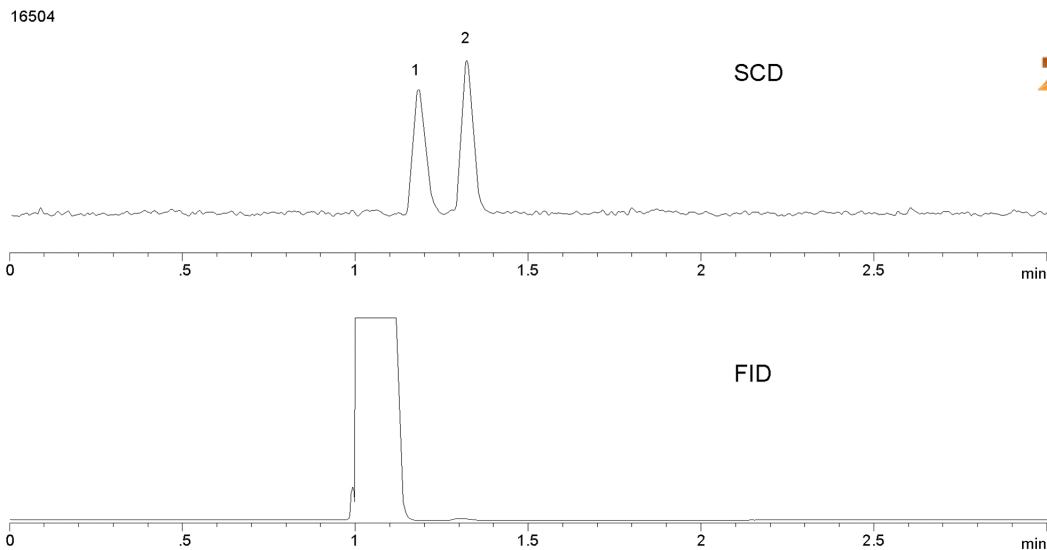
Injection: Split 10:1 0,5 µL @ 100°C

Detection: Sulfur (SCD) (200°C)

Analyst Note: Analytes are 5ppm in Ethylene



Products used in this application:



ANALYTES:

- 1 Hydrogen sulfide (H₂S)
- 2 COS

